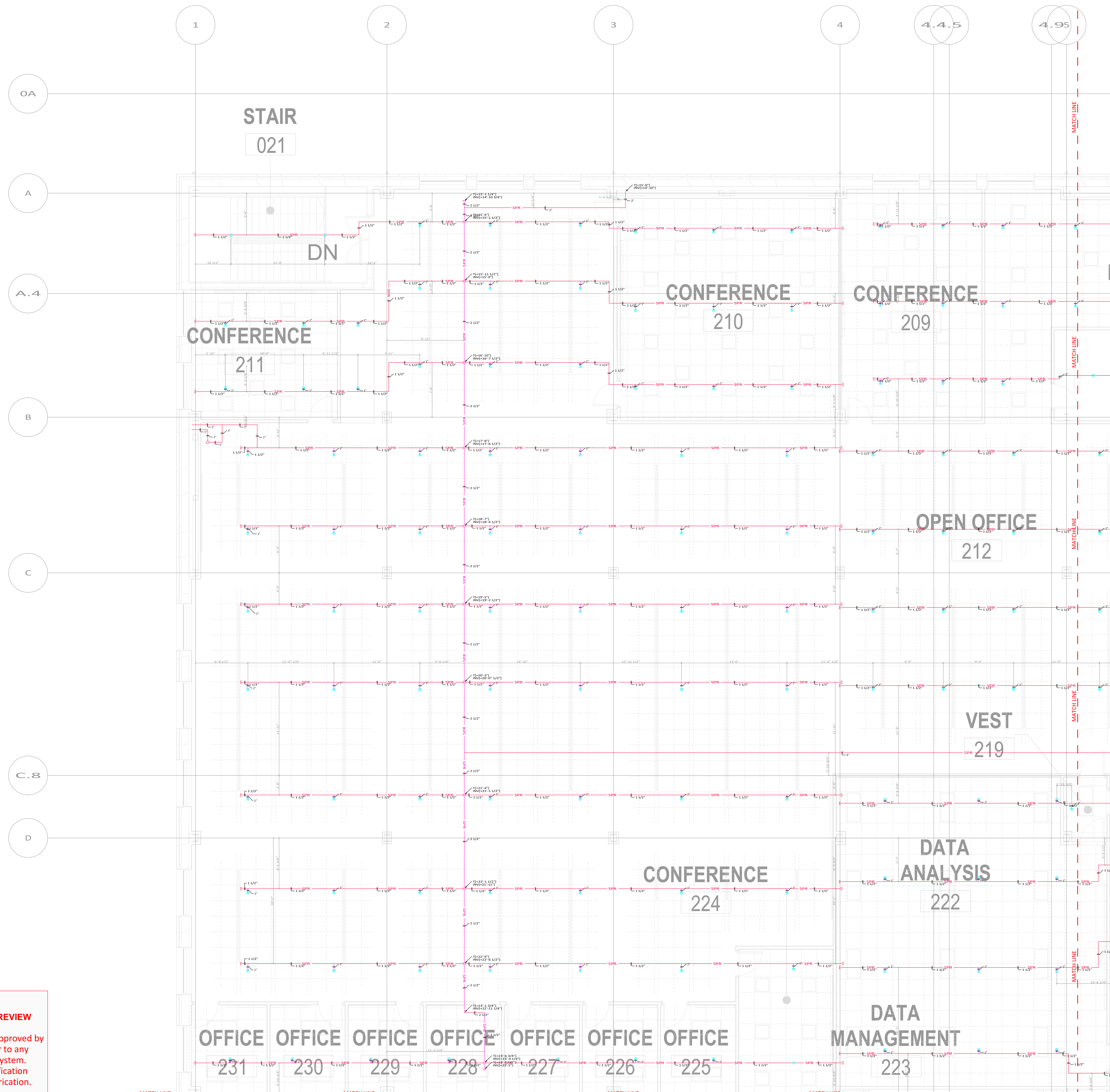
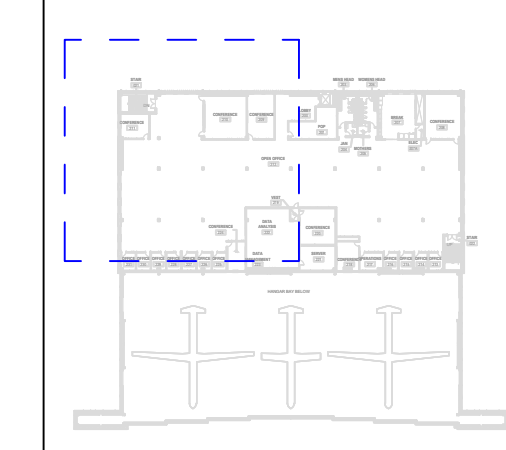


# KEYPLAN



**FOR SUBMISSION-ENGINEER REVIEW**

All submission drawings are to be approved by the Architect and Engineer prior to any fabrication and installation of system. Field and contract drawing verification required prior to automated fabrication.

REVISIONS	NO.	DATE

TRADE	COMPANY	DATE	AUTHORIZED SIGNATURE
SHEET METAL			
PLUMBING			
SPRINKLER			
GENL CONTRACTOR			
ARCHITECT			
ENGINEER			

CONTRACTORS

SPRINKLER CONTRACTOR

THIS DRAWING IS PRODUCED BY:

**SHOPDRAWINGS.COM**  
10315 CANNON FORGE LANE  
HAGERSTOWN MD 21742  
301-926-6000  
WWW.SHOPDRAWINGS.COM

FP-201

PROJECT:

**P265 UCLASS  
RDT&E HANGAR**

NAVAL AIR STATION  
PATUXEN RIVER  
PATUXEN RIVER, MD

**2ND FLOOR  
SPRINKLER**

SCALE: 1/4"=1'-0"  
June 25, 2020